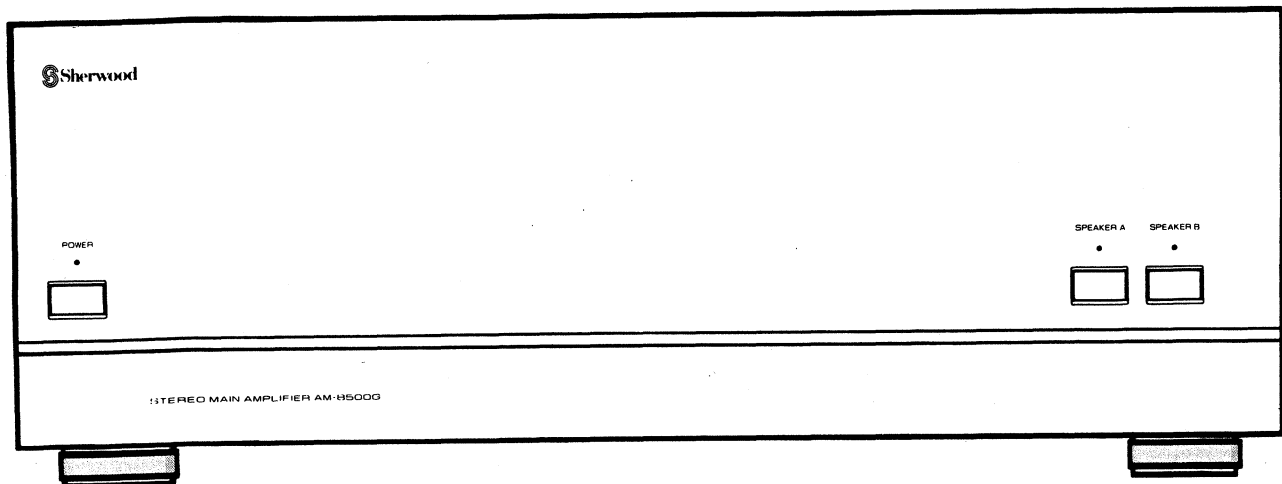


SERVICE MANUAL

AM-8500G/B STEREO POWER AMPLIFIER



■ CONTENTS

Safety Precautions.....	2	Point to Point Wiring Diagram (I · II · III).....	13
Specifications.....	3	Mechanical Parts List.....	16
Electrical Parts List.....	4	Exploded View of Cabinet & Chassis.....	17
Top & Bottom View of P.C Boards.....	7	Schematic Diagram.....	19

NOTICE

- This manual is for authorized and qualified service personnel, so the basic service procedure and commonsense of safety are not described in this manual.
- Sherwood always every endeavor to improve the products, therefore the specifications and data provided are subject to change without notice.



SAFETY PRECAUTIONS

WARNING

Before servicing this unit, familiarize yourself with the following precautions:

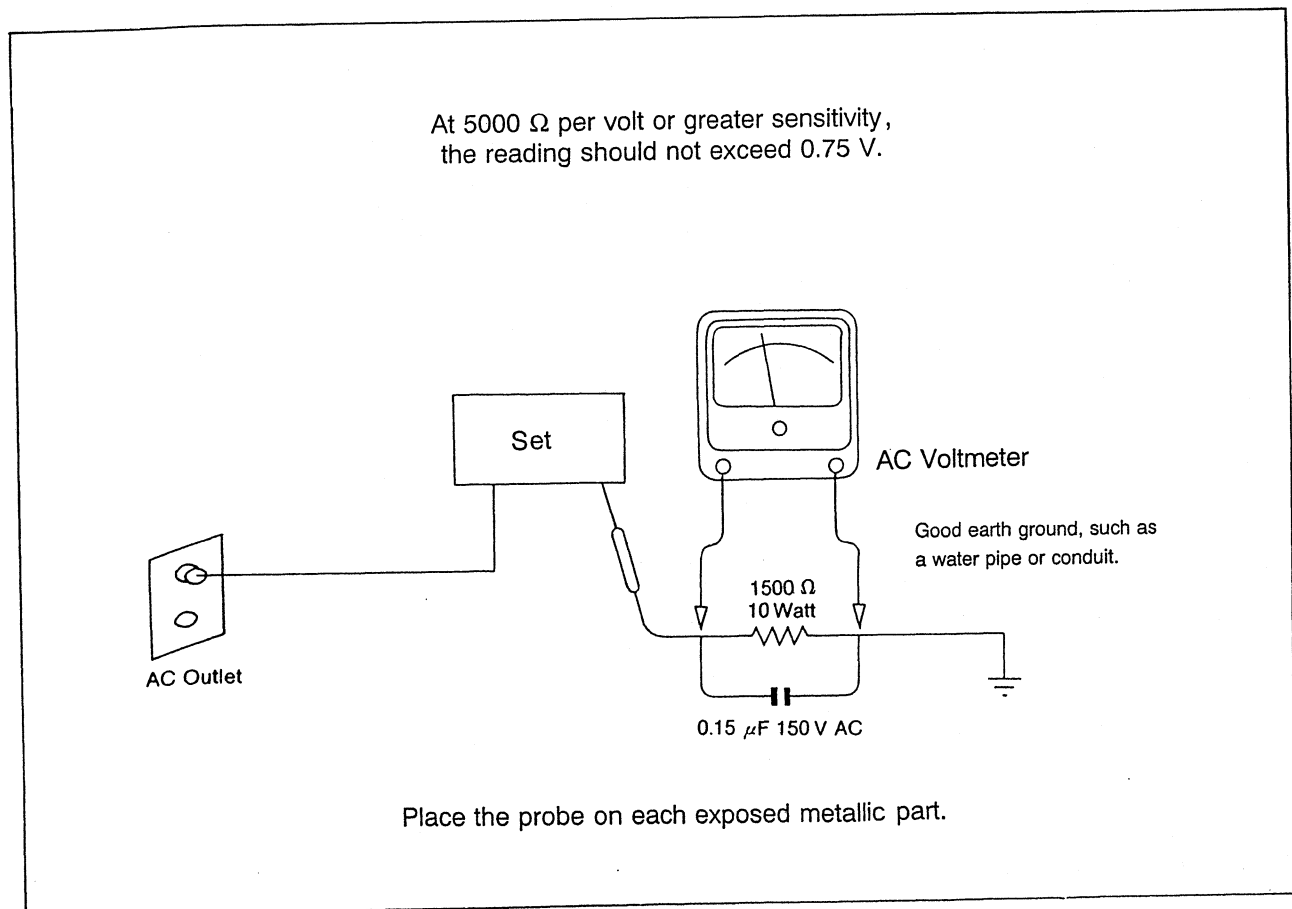
1. Many electrical and mechanical parts in this player have special safety characteristics that often pass unnoticed and the protection afforded by them cannot necessarily be obtained by using replacement components rated for higher voltage, wattage, etc. Replacement parts that have these special safety characteristics are identified in this manual and its supplements; electrical components having such features are identified by \triangle in the schematic diagram and the parts list.

Before replacing any of these components, read the parts list in this manual carefully. The use of substitute replacement parts that do not have the same safety characteristics as specified in the parts list may create shock, fire, or other hazards.

2. Before returning the set to the customer, always do an AC leakage current check on the exposed metal parts of the cabinet, such

as terminals, screw heads, and metal overlays, to be sure the set is safe to operate without danger of electrical shock.

Plug the AC line cord directly into a 120 V AC outlet (**120 V AC version only**). (Do not use a line isolation transformer during this check.) Be sure your AC voltmeter has a sensitivity of 5000Ω per volt or greater. Then connect a 1500Ω 10 watt resistor, paralleled by a $0.15 \mu\text{F}$ 150 V AC capacitor, between a known good earth ground (water pipe, or conduit) and the exposed metallic parts, one at a time. Measure the AC voltage across the combination of a 1500Ω resistor and a $0.15 \mu\text{F}$ capacitor. Reverse the AC plug at the AC outlet and repeat AC voltage measurements for each exposed metallic part. Voltage measured must not exceed 0.75 V RMS. This corresponds to 0.2 mA AC. Any value exceeding this limit constitutes a potential shock hazard and must be corrected immediately.



Specifications

IHF/EIA Version

Power Output per Channel, Minimum RMS 20-20 kHz (FTC Power)	
no more than 0.04% THD, into 8 ohms	200W
no more than 0.08% THD, into 4 ohms	320W
Dynamic Power Output per Channel (FTC Power + Dynamic Headroom)	
into 8 ohms	250W
into 4 ohms	450W
into 2 ohms	650W
Intermodulation Distortion into 8 ohms at 200W	0.02%
Damping Factor into 8 ohms at 50 Hz	150
Frequency Response, -3 dB	5 Hz-150 kHz
Signal to Noise Ratio, "A" wtd/unwtd	
at 1kohm 200W Terminated	120/90 dB
at 1kohm 1W Terminated	95/80 dB
Input Sensitivity into 8 ohms, at 1 kHz 200W	1000mV
Channel Separation	
at 1 kHz, 1 kohm Terminated	80 dB
at 70 Hz, 1 kohm Terminated	70 dB

DIN/IEC Version

Power output per Channel	
IEC Standard, at 63-12,500 Hz into 8 ohms	220W
at 63-12,500 Hz into 4 ohms	340W
DIN Standard, at 1 kHz into 8 ohms	230W
at 1 kHz into 4 ohms	350W
Dynamic Power output per Channel	
into 8 ohms	270W
into 4 ohms	450W
into 2 ohms	650W
Total Harmonic Distortion, -6 dB Rated Output Power	
at 1 kHz into 8 ohms	0.007%
at 10 kHz into 8 ohms	0.009%
Intermodulation Distortion, -6 dB Rated Output Power	
into 8 ohms	0.007%
into 4 ohms	0.008%
Damping Factor at 200W 50 Hz, into 8 ohms	150
Frequency Response, -3 dB	5 Hz-150 kHz
Signal to Noise Ratio, "A" wtd/unwtd (at 22 kohm Terminated, Reference 0 dB)	
at 200W into 8 ohms	110/90 dB
at 1W into 8 ohms	90/80 dB
Input Sensitivity at 200W, 1 kHz into 8 ohms	1000mV
Channel Separation at 200W into 8 ohms	
22 kohms Terminated at 1 kHz	80 dB
22 kohms Terminated at 10 kHz	70 dB

General Specifications

Power Consumption	
IHF/EIA Version	450W Max (Vol Min 60W)
DIN/IEC Version	1300W Max
Slew Rate	40V/ μ s
Rising Time	2.0 μ sec
Dimensions	(W)440x(H)150x(D)400mm (W)17.3x(H)5.9x(D)15.7inch
Weight	22.5 Kg (56.1 lbs)

Power Requirements

- A : 120 V 60 Hz for American/Canadian version
- B : 120/220 V, 60/50 Hz for multi-voltage version (switchable)
- D : 230 V 50 Hz German/General European version
- E : 240 V 50 Hz for UK/Australian version
- G : 220 V 50 Hz for Other Area

Electrical Parts List

FRONT BOARD 4002125700

Ref. No	Parts No.	Description	Remark
• Capacitors			
C109L/R	3479210061	Electrolytic 10µF/35V	
C110L/R	3479210061	Electrolytic 10µF/35V	
C111L/R	3579101130	Ceramic 100pF/50V	
C112L/R	3479473530	Electrolytic 47µF/25V	
C113L/R	3579473530	Ceramic 0.047µF/50V	
C114L/R	3579473530	Ceramic 0.047µF/50V	
C117L/R	3579102530	Ceramic 0.01µF/50V	
C118L/R	3579102530	Ceramic 0.01µF/50V	
C121L/R	3509100050	Ceramic 10pF/500V	
C122L/R	3509100050	Ceramic 10pF/500V	
C125L/R	3579473530	Ceramic 0.047µF/50V	
C126L/R	3579473530	Ceramic 0.047µF/50V	
C129L/R	3409222141	Electrolytic 220µF/25V	
C130L/R	3409222141	Electrolytic 220µF/25V	
C131L/R	3509103450	Ceramic 0.01µF/500V	
C132L/R	3509103450	Ceramic 0.01µF/500V	
C133L/R	3509150005	Ceramic 15pF/500V	
C139L/R	3579473530	Ceramic 0.047µF/50V	
C101L/R	3579330130	Ceramic 33pF/50V	
C103L/R	3409233041	Electrolytic 22µF/25V	
C104L/R	3409222041	Electrolytic 22µF/25V	
• Diode			
D101L/R	2058306101	1N4148	
D102L/R	2058306101	1N4148	
D103L/R	2058599100	Zener, DZ3.3BM	
D104L/R	2058599100	Zener, DZ3.3BM	
D105L/R	2058599100	Zener, DZ3.3BM	
D106L/R	2058599100	Zener, DZ3.3BM	
D107L/R	2058306101	1N4148	
D401L/R	2058306101	1N4148	
D402L/R	2058306101	1N4148	
• ICs			
IC40	2168000114	MC 4558	
IC501	2168601106	Reaulator 7818	
IC502	2168600106	Reaulator 7918	
• Resistors			
R109L/R	3069473270	Metal Film 470Kohm 1/4W J	
R110L/R	3069102270	Metal Film 1Kohm 1/4W J	
R111L/R	3069473270	Metal Film 470Kohm 1/4W J	
R112L/R	3069473270	Metal Film 470Kohm 1/4W J	
R113L/R	3069102270	Metal Film 1Kohm 1/4W J	
R114L/R	3069102270	Metal Film 1Kohm 1/4W J	
R115L/R	3069102270	Metal Film 1Kohm 1/4W J	
R116L/R	3069102270	Metal Film 1Kohm 1/4W J	
R117L/R	3069473270	Metal Film 47Kohm 1/4W J	
R118L/R	3069473270	Metal Film 47Kohm 1/4W J	
R119L/R	3069122270	Metal Film 1.2Kohm 1/4W J	
R120L/R	3069122270	Metal Film 1.2Kohm 1/4W J	
R121L/R	3069101270	Metal Film 100Kohm 1/4W J	
R122L/R	3069101270	Metal Film 100Kohm 1/4W J	
R123L/R	3069101270	Metal Film 100Kohm 1/4W J	
R124L/R	3069101270	Metal Film 100Kohm 1/4W J	
R125L/R	3069222270	Metal Film 2.2Kohm 1/4W J	
R126L/R	3069222270	Metal Film 2.2Kohm 1/4W J	
R127L/R	3069222270	Metal Film 2.2Kohm 1/4W J	
R128L/R	3069222270	Metal Film 2.2Kohm 1/4W J	
R129L/R	3069102270	Metal Film 1Kohm 1/4W J	
R130L/R	3069102270	Metal Film 1Kohm 1/4W J	
R131L/R	3069123270	Metal Film 12Kohm 1/4W J	
R132L/R	3069123270	Metal Film 12Kohm 1/4W J	

Ref. No	Parts No.	Description	Remark
R133L/R	3069472270	Metal Film 4.7Kohm 1/4W J	
R134L/R	3069472270	Metal Film 4.2Kohm 1/4W J	
R135L/R	3069102270	Metal Film 1Kohm 1/4W J	
R136L/R	3069224270	Metal Film 220Kohm 1/4W J	
R137L/R	3069101270	Metal Film 100Kohm 1/4W J	
R138L/R	3069101270	Metal Film 100Kohm 1/4W J	
R139L/R	3069479270	Metal Film 4.7 ohm 1/4W J	
R140L/R	3069479270	Metal Film 4.7 ohm 1/4W J	
R141L/R	3069561270	Metal Film 560 Kohm 1/4W J	
R142L/R	3069102270	Metal Film 1Kohm 1/4W J	
R143L/R	3069273270	Metal Film 27Kohm 1/4W J	
R401L/R	3069183270	Metal Film 18Kohm 1/4W J	
R402L/R	3069183270	Metal Film 18Kohm 1/4W J	
R403L/R	3069472270	Metal Film 4.7Kohm 1/4W J	
R404L/R	3069242270	Metal Film 2.4Kohm 1/4W J	
R405L/R	3069472270	Metal Film 4.7Kohm 1/4W J	
R406L/R	3069273270	Metal Film 27Kohm 1/4W J	
• Transistors			
Q101L/R	2008417121	NPN 2SC3067	
Q102L/R	2008017101	PNP 2SA1240	
Q103L/R	2208606108	NPN KTC 2240BL	
Q104L/R	2008206104	PNP KTC 970BL	
Q105L/R	2208606108	NPN KTC 2240BL	
Q106L/R	2008206104	PNP KTC 970BL	
Q107L/R	2208606108	NPN KTC 2240BL	
Q108L/R	2008206104	PNP KTC 970BL	
Q109L/R	2018206109	FET 2SK30A	
Q110L/R	2018206109	FET 2SK30A	
Q111L/R	2008206104	PNP KTC 970BL	
Q112L/R	2208606108	NPN KTC 2240BL	
Q113L/R	2028116106	PNP 2SA 958	
Q114L/R	2028416109	NPN 2SC2168	
• LEDs			
LED1,LED2	2371165502	SUR-54YCD	
LED3	2308220109	SUR-54URC3	

POWER-A BOARD 4002118500

Ref. No	Parts No.	Description	Remark
* Capacitor			
C201	3409210991	Electrolytic 1μF/100V	
* Diode			
D201	2058106101	Rectifier 1N4003	
* Resistors			
R203	3039681472	Metal Oxide 680 ohm 1W	
R205	3039681472	Metal Oxide 680 ohm 1W	
R207	3039681472	Metal Oxide 680 ohm 1W	
R209	3039681472	Metal Oxide 680 ohm 1W	
R211	3059278682	Cement 0.27 ohm 3W	
R213	3059278682	Cement 0.27 ohm 3W	
R215	3059278682	Cement 0.27 ohm 3W	
R216	3059278682	Cement 0.27 ohm 3W	
R223	3069100472	Metal Oxide 10 ohm 1W	
R225	3039100472	Metal Oxide 10 ohm 1W	
R227	3039100472	Metal Oxide 10 ohm 1W	
R229	3039100472	Metal Oxide 10 ohm 1W	
* Transistors			
Q203	2028811101	MOS-FET 2SK1058	
Q205	2028811101	MOS-FET 2SK1058	
Q207	2028811101	MOS-FET 2SK1058	

INPUT BOARD 4002119500

Ref. No	Parts No.	Description	Remark
* Capacitor			
C102L/R	3579101130	Ceramic 100pF/50V	
C104L/R	3579101130	Ceramic 100pF/50V	
C106L/R	3579331130	Ceramic 330pF/50V	
C107L/R	3479247041	Electrolytic 47μF/25V	
C108L/R	3479247041	Electrolytic 47μF/25V	
C152L/R	3479247971	Electrolytic 4.7μF/50V	
* IC			
IC10L/R	2168020106	NJM 2068	
* Resistors			
R104L/R	3069101270	Metal Film 100 ohm 1/4W J	
R105L/R	3069101270	Metal Film 100 ohm 1/4W J	
R106L/R	3069121270	Metal Film 120 ohm 1/4W J	
R107L/R	3069272270	Metal Film 2.7 Kohm 1/4W J	
R108L/R	3069473270	Metal Film 47 ohm 1/4W J	
R162L/R	3069104270	Metal Film 100 Kohm 1/4W J	
R163L/R	3069471270	Metal Film 470 ohm 1/4W J	

POWER-B BOARD 4002118510

Ref. No	Parts No.	Description	Remark
* Capacitor			
C202	3409210991	Electrolytic 1μF/100V	
* Diode			
D202	2058106101	Rectifier 1N4003	
* Resistors			
R204	3039681472	Metal Oxide 680 ohm 1W	
R206	3039681472	Metal Oxide 680 ohm 1W	
R208	3039681472	Metal Oxide 680 ohm 1W	
R210	3039681472	Metal Oxide 680 ohm 1W	
R212	3059278682	Cement 0.27 ohm 3W	
R214	3059278682	Cement 0.27 ohm 3W	
R216	3059278682	Cement 0.27 ohm 3W	
R218	3059278682	Cement 0.27 ohm 3W	
R224	3069100472	Metal Oxide 10 ohm 1W	
R226	3039100472	Metal Oxide 10 ohm 1W	
R228	3039100472	Metal Oxide 10 ohm 1W	
R230	3039100472	Metal Oxide 10 ohm 1W	
* Transistors			
Q204	2028811101	MOS-FET 2SJ162	
Q206	2028811101	MOS-FET 2SJ162	
Q208	2028811101	MOS-FET 2SJ162	

FUSE BOARD 4002118660

Ref. No	Parts No.	Description	Remark
* Capacitors			
C512	3549472407	Ceramic 0.0047μF 400V AC	
C512	3509103450	Ceramic 0.0047μF 400V AC	
* Diode			
D501L/R	2058113131	Rectifier, MB254	
* Fuse			
F506L/R	5508113230	SB 4A 250V AC, 31.8mm	
* Power Transformers			
	2828060111	L-CH	
	2828060101	R-CH	
	2828000631	L-CH	
	2828000621	R-CH	
	2828060411	L-CH	
	2828060401	R-CH	
	4678600100	Reseting Thermal Protector T135 ARIUI	

SPEAKER-A BOARD 4002119510

Ref. No	Parts No.	Description	Remark
• Capacitors			
C301L/R	3409247871	Electrolytic 0.047 μ F 50V	
C302	3409247971	Electrolytic 4.7 μ F 50V	
C303	3408247111	Electrolytic 470 μ F 6.3V	
C304	3409210131	Electrolytic 100 μ F 16V	
C309L/R	3609223180	Metallized Poly 0.022 μ F 630V	
• Diodes			
D301L/R	2058306101	1N4148	
D302L/R	2058306101	1N4148	
D303	2058106101	1N4003, Rectifier	
D304	2058599116	DZ-12BM, Zener	
D305	2058106101	1N4003, Rectifier	
D306	2058106101	1N4003, Rectifier	
RLY1	5528001470	HL2-HP-DC24V, Relay	
RLY2	5528001470	HL2-HP-DC24V, Relay	
L301L/R	2468001010	0.5 μ H, Inductor	
L302L/R	2468001010	0.5 μ H, Inductor	
• Resistors			
R301L/R	3069332270	Metal Film 3.3Kohm 1/4W J	
R302L/R	3069273270	Metal Film 27Kohm 1/4W J	
R303	3069102270	Metal Film 1Kohm 1/4W J	
R304	3069474270	Metal Film 470Kohm 1/4W J	
R306	3069103270	Metal Film 10Kohm 1/4W J	
R307	3069273270	Metal Film 27Kohm 1/4W J	
R308	3069101270	Metal Film 100ohm 1/4W J	
R309	3069104270	Metal Film 100Kohm 1/4W J	
R310	3069333270	Metal Film 33Kohm 1/4W J	
R311	3069103270	Metal Film 10Kohm 1/4W J	
R312	3069103270	Metal Film 10Kohm 1/4W J	
R313	3069333270	Metal Film 33Kohm 1/4W J	
R314	3069681270	Metal Film 680ohm 1/4W J	
R315L/R	3069183270	Metal Film 18Kohm 1/4W J	
R316	3069561270	Metal Film 560ohm 1/4W J	
R319	3039339472	Metal Oxide 3.3ohm 1W	
R320	3039339472	Metal Oxide 3.3ohm 1W	
R321L/R	3039339472	Metal Oxide 3.3ohm 1W	
R322L/R	3039339472	Metal Oxide 3.3ohm 1W	
R327L/R	3039220572	Cement 22ohm 2W	
R328L/R	3039220572	Cement 22ohm 2W	
R371	3069473270	Metal Film 47ohm 1/4W J	
R374	3039222472	Metal Oxide 2.2kohm 1W J	
R381	3069103270	Metal Film 10Kohm 1/4W J	
• Transistors			
Q301L/R	2008609102	MPSA 06	
Q302	2008209101	MPSA 55	
Q303	2008609102	MPSA 06	
Q304	2008609102	MPSA 06	
Q305	2008609102	MPSA 06	
Q306	2008609102	MPSA 06	
Q307	2008609102	MPSA 06	
Q308	2008609102	MPSA 06	
Q309	2008609102	MPSA 06	
Q310	2008609102	MPSA 06	

SPEAKER-B BOARD 4002119500

Ref. No	Parts No.	Description	Remark
• Capacitors			
C305L/R	3609223180	Metallized Poly 0.022 μ F/630V	
C306L/R	3609223180	Metallized Poly 0.022 μ F/630V	
• Resistors			
R323L/R	3039220472	Metal Oxide 22ohm 2W J	
R324L/R	3039220472	Metal Oxide 22ohm 2W J	
R325L/R	3039220472	Metal Oxide 22ohm 2W J	
R326L/R	3039220472	Metal Oxide 22ohm 2W J	

MAIN SUPPLY -A BOARD 4002118620

Ref. No	Parts No.	Description	Remark
• Capacitors			
C501L/R	3419582210	Electrolytic 8200 μ F	80V
C502L/R	3419582210	Electrolytic 8200 μ F	80V
C503L/R	3419582210	Electrolytic 8200 μ F	80V
C504L/R	3419582210	Electrolytic 8200 μ F	80V

18V REGULATOR BOARD 4002118640

Ref. No	Parts No.	Description	Remark
• Capacitors			
C505	3409247161	Electrolytic 470 μ F/35V	
C506	3409247161	Electrolytic 470 μ F/35V	
C511	3409247041	Electrolytic 47 μ F/35V	
• Diodes			
△ D502	2058106101	Rectifier 1N4003	
△ D503	2058106101	Rectifier 1N4003	
△ D504	2058106101	Rectifier 1N4003	
△ D505	2058106101	Rectifier 1N4003	
△ D506	2058106101	Rectifier 1N4003	
△ D507	2058106101	Rectifier 1N4003	
• Fuses			
△ F501L/R	5508113336	SB 7A 250V AC, 31.8mm	Rear Panel A, B
△ F501L/R	5508302934	TL 4A 250V AC 20mm	Rear Panel C, D, E, F
△ F502L/R	5508113431	SB 10A 250V AC, 31.8mm	Rear Panel A, B, C, D, E, F
△ F503L/R	5508113431	SB 10A 250V AC, 31.8mm	Rear Panel A, B, C, D, E, F
△ F504	5508211631	NB0.54A 250V AC, 31.8mm	A, B, KS
△ F504	5508301634	TL 500mV 250V AC, 20mm	C, D, E, F
△ F505	5508211631	NB 0.5A 250V AC, 31.8mm	A, B, KS
△ F505	5508301634	TL 500mV 250V AC, 20mm	C, D, E, F
• Resistors			
R501	3039339472	Metal Oxide 3.3 ohm(1W)	
R502	3039339472	Metal Oxide 3.3 ohm(1W)	
R503	3039222472	Metal oxide 2.2 ohm	

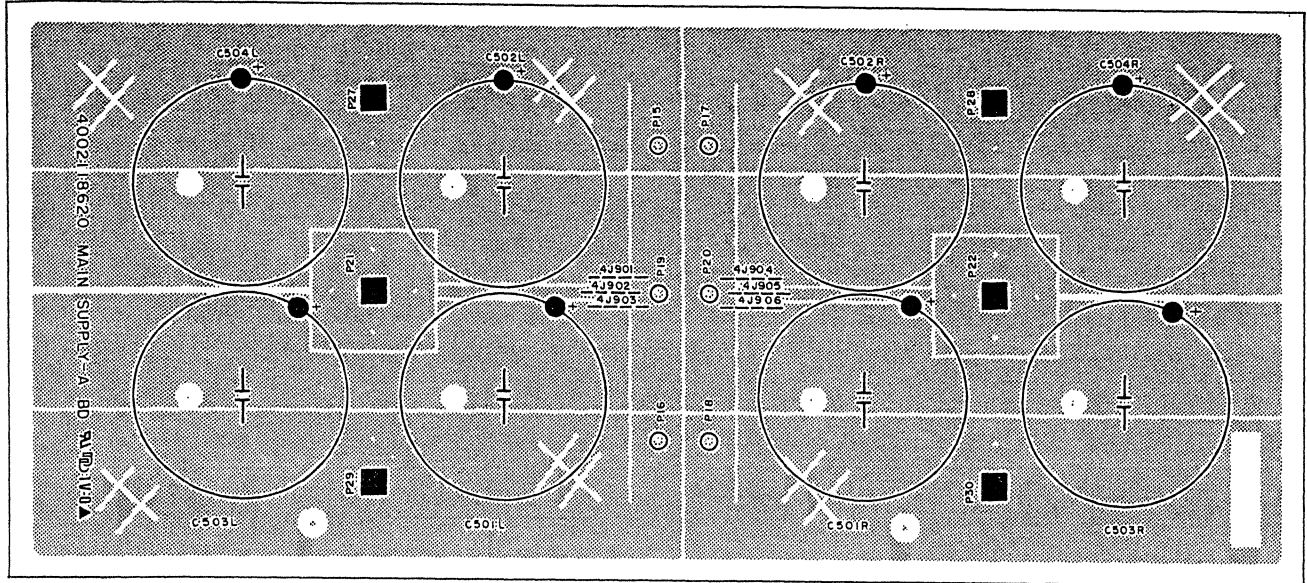
LED BOARD 4002125710

Ref. No	Parts No.	Description	Remark
LED3	2381215702D	LED, SLR-54UR CA49	

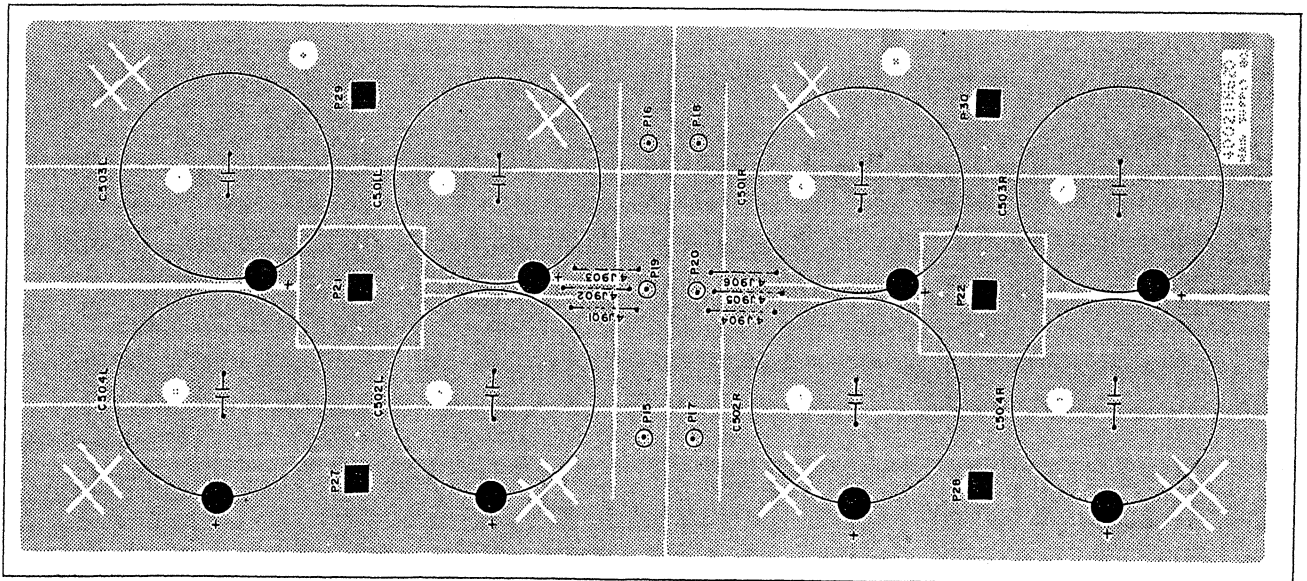
Top & Bottom View of P.C Boards

MAIN SUPPLY-A BOARD 4002118620

-TOP VIEW

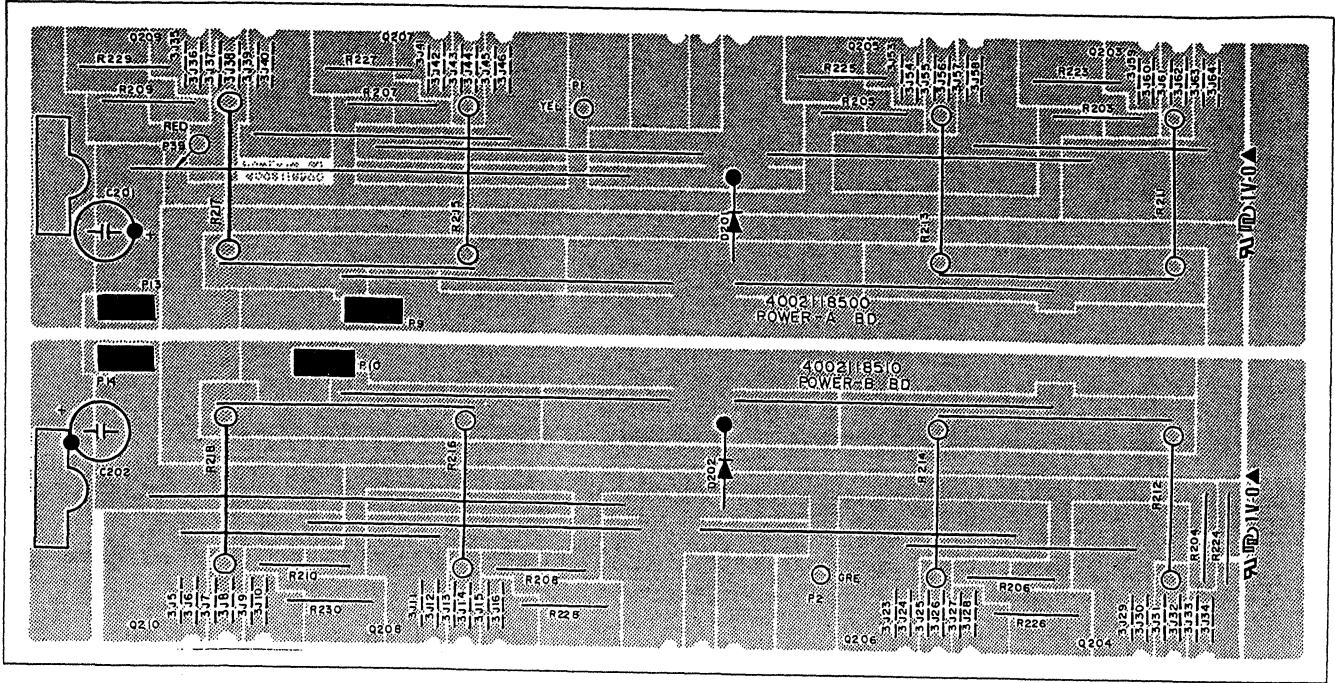


-BOTTOM VIEW

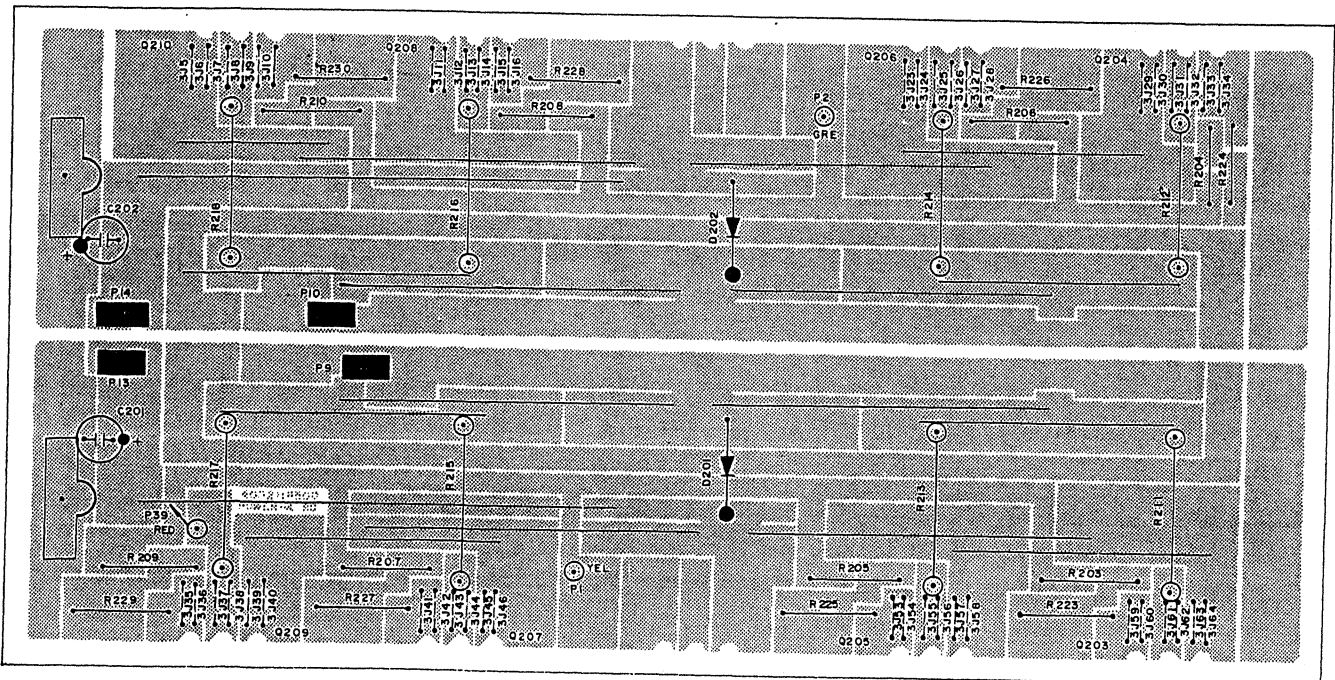


POWER-A BOARD 4002118500, POWER-B BOARD 4002118510

-TOP VIEW

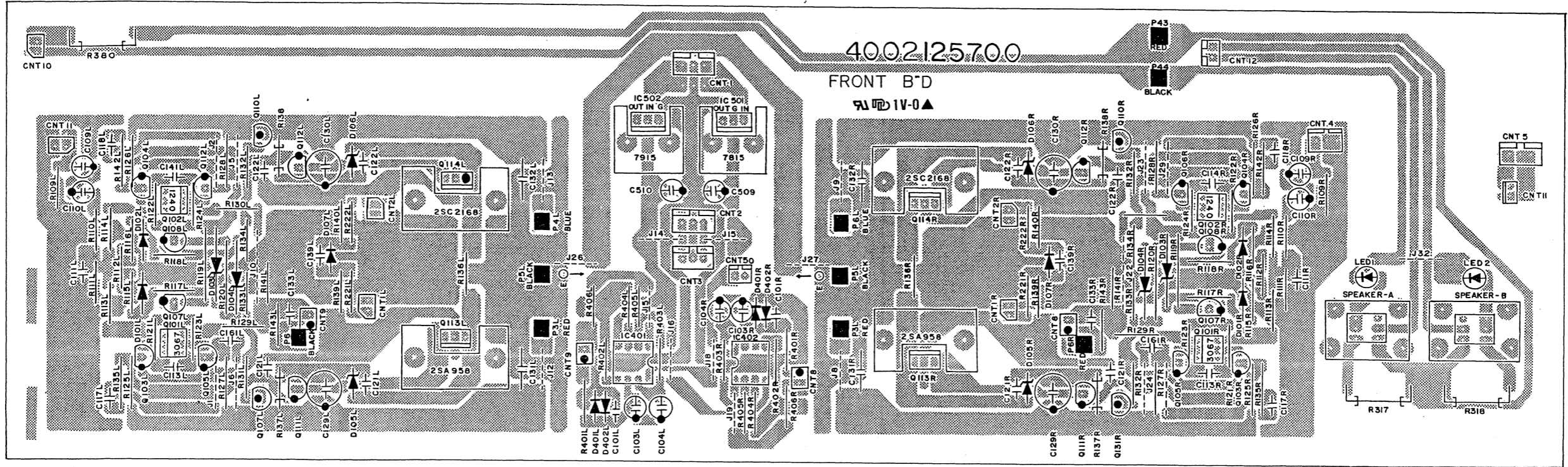


-BOTTOM VIEW



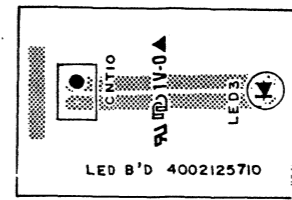
FRONT BOARD 4002125700

- TOP VIEW

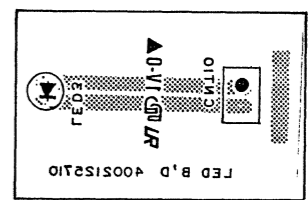


LED BOARD 4002125710

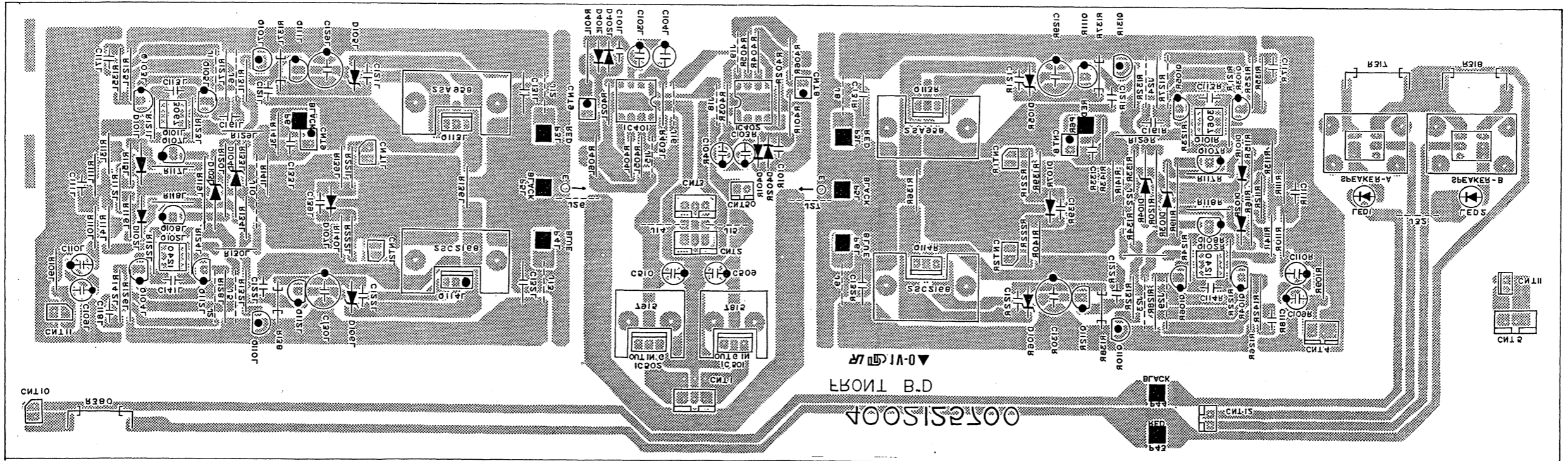
- TOP VIEW



- BOTTOM VIEW

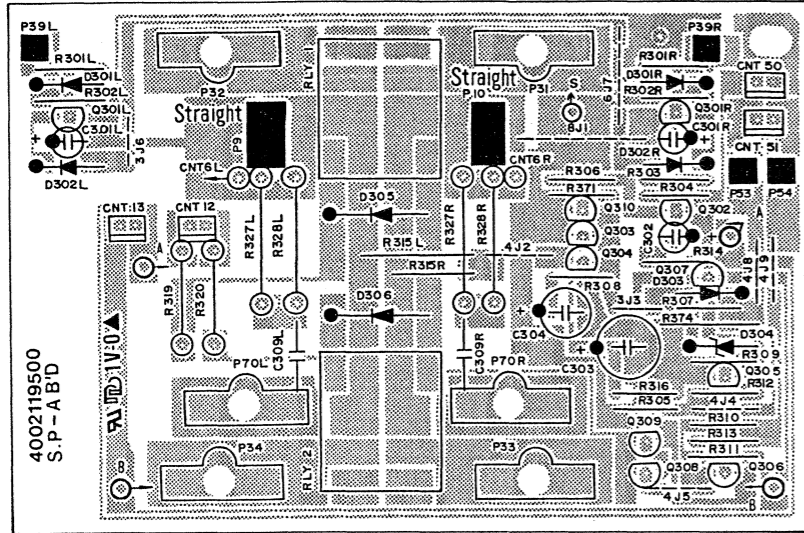


- BOTTOM VIEW

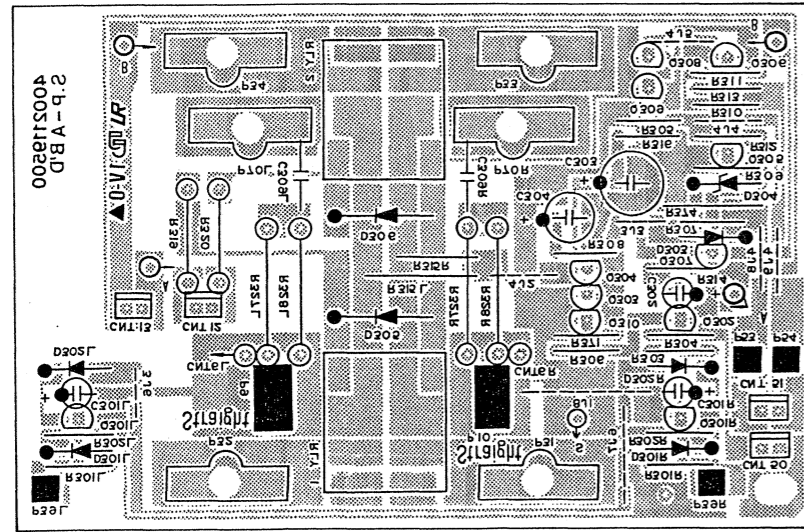


SP-A BOARD 4002118600

- TOP VIEW

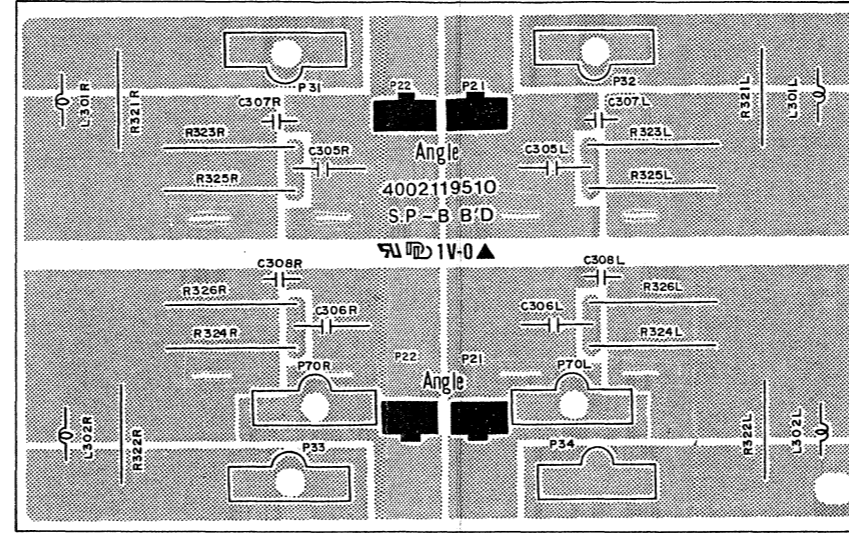


- BOTTOM VIEW

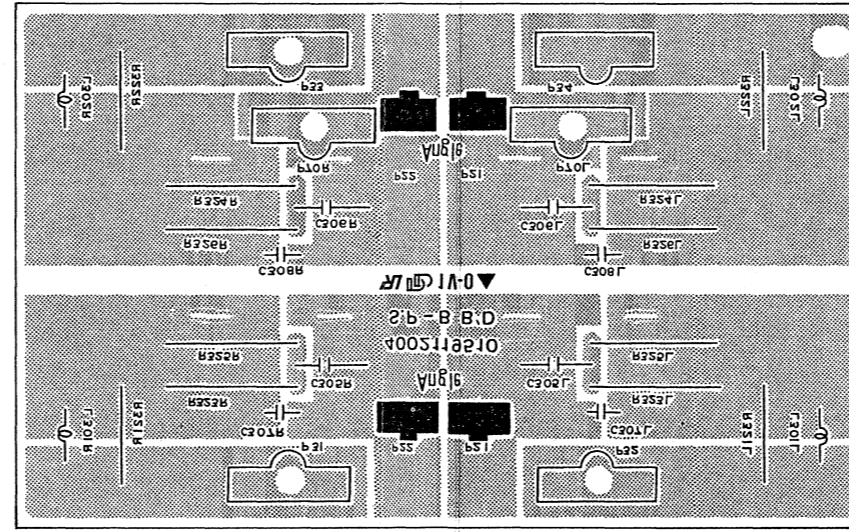


SP-B BOARD 4002118610

- TOP VIEW

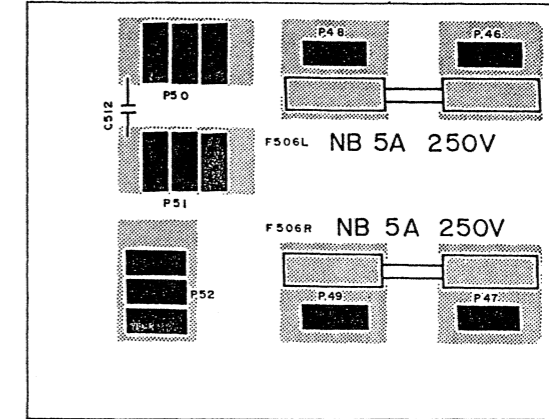


- BOTTOM VIEW

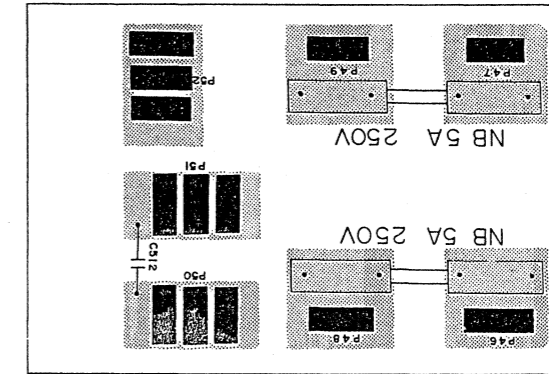


FUSE BOARD 4002118660

- TOP VIEW

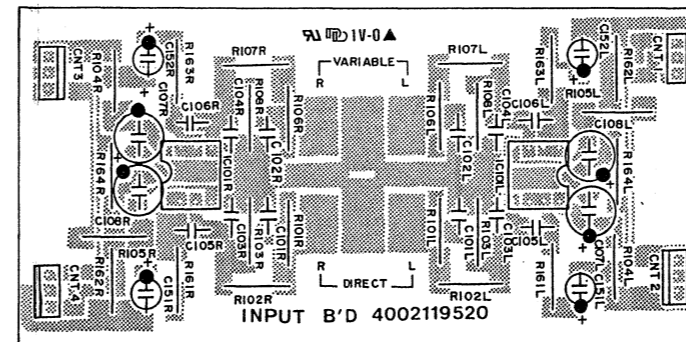


- BOTTOM VIEW

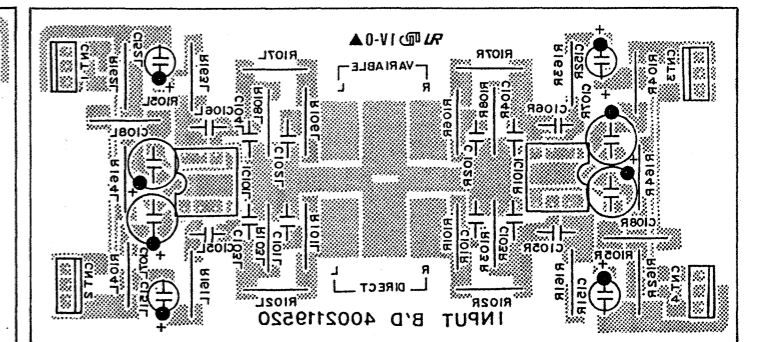


INPUT BOARD 4002119500

- TOP VIEW

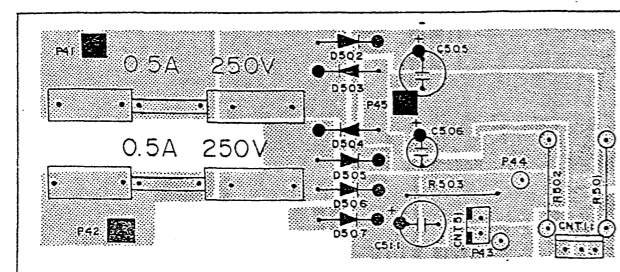


- BOTTOM VIEW

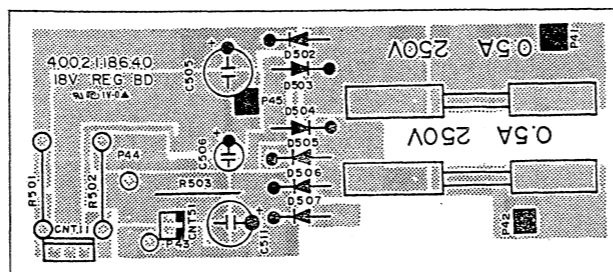


18V REG BOARD 4002118640

- TOP VIEW

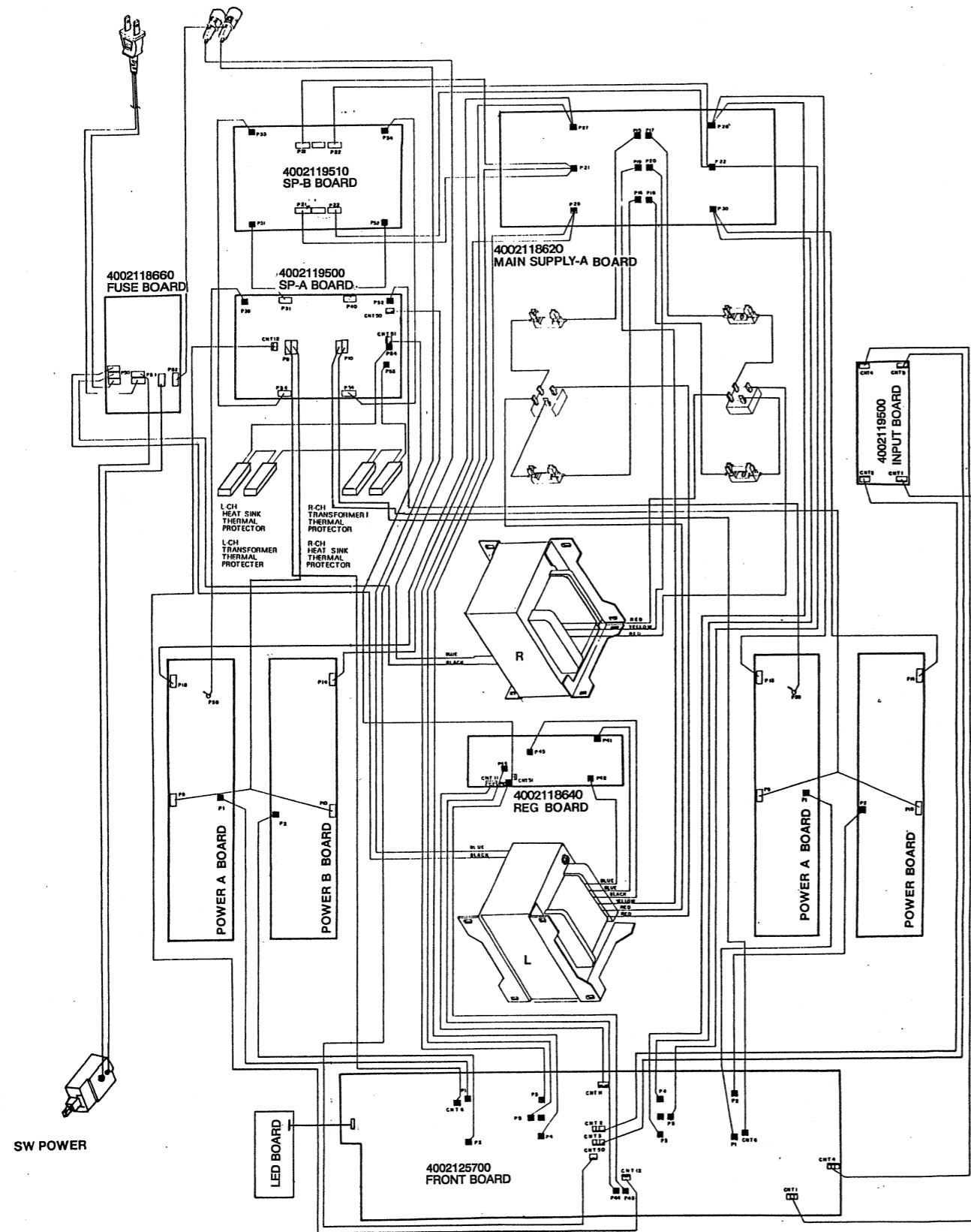


- BOTTOM VIEW



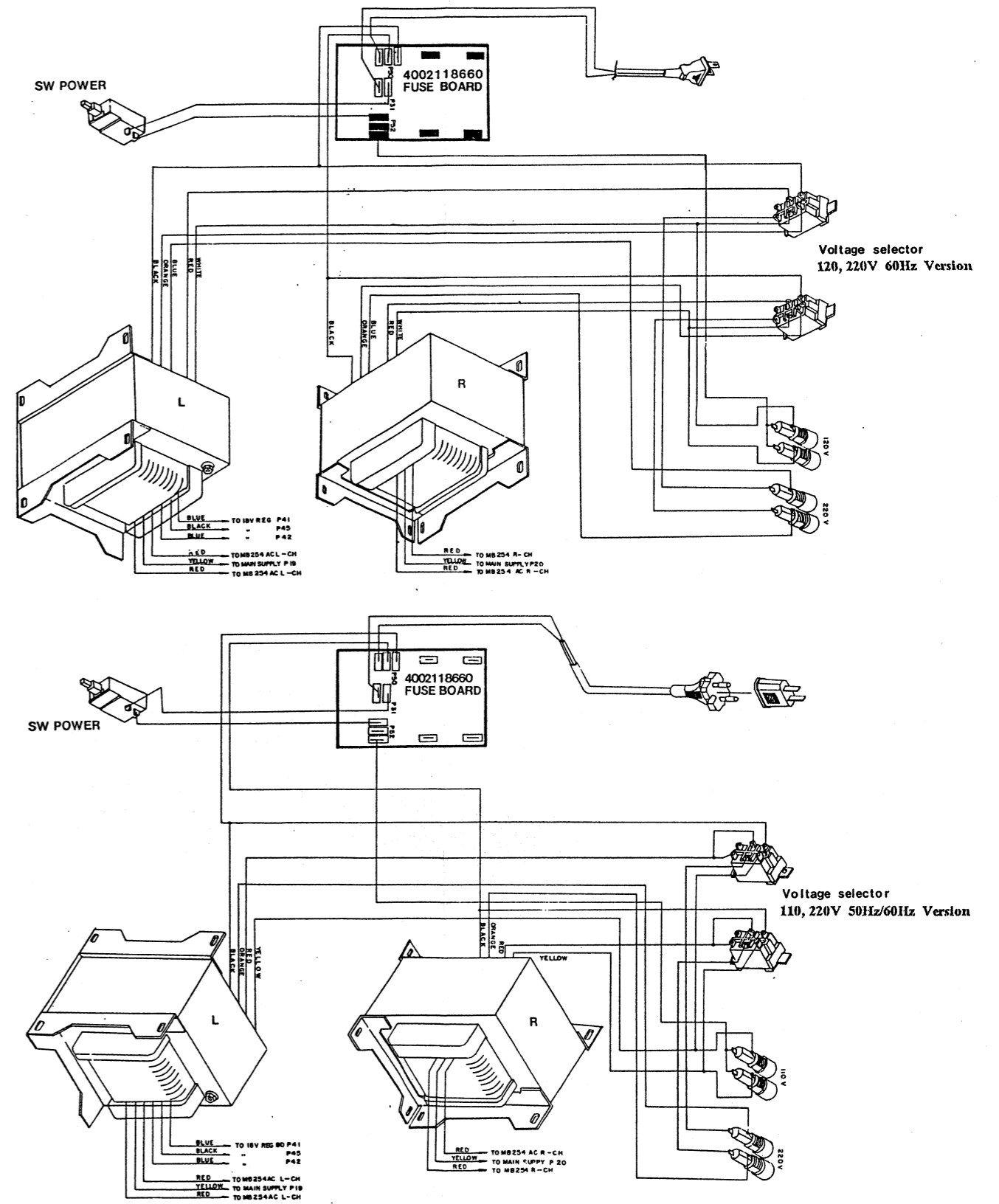
Point to Point Wiring Diagram(I).

Model : AM-8500G



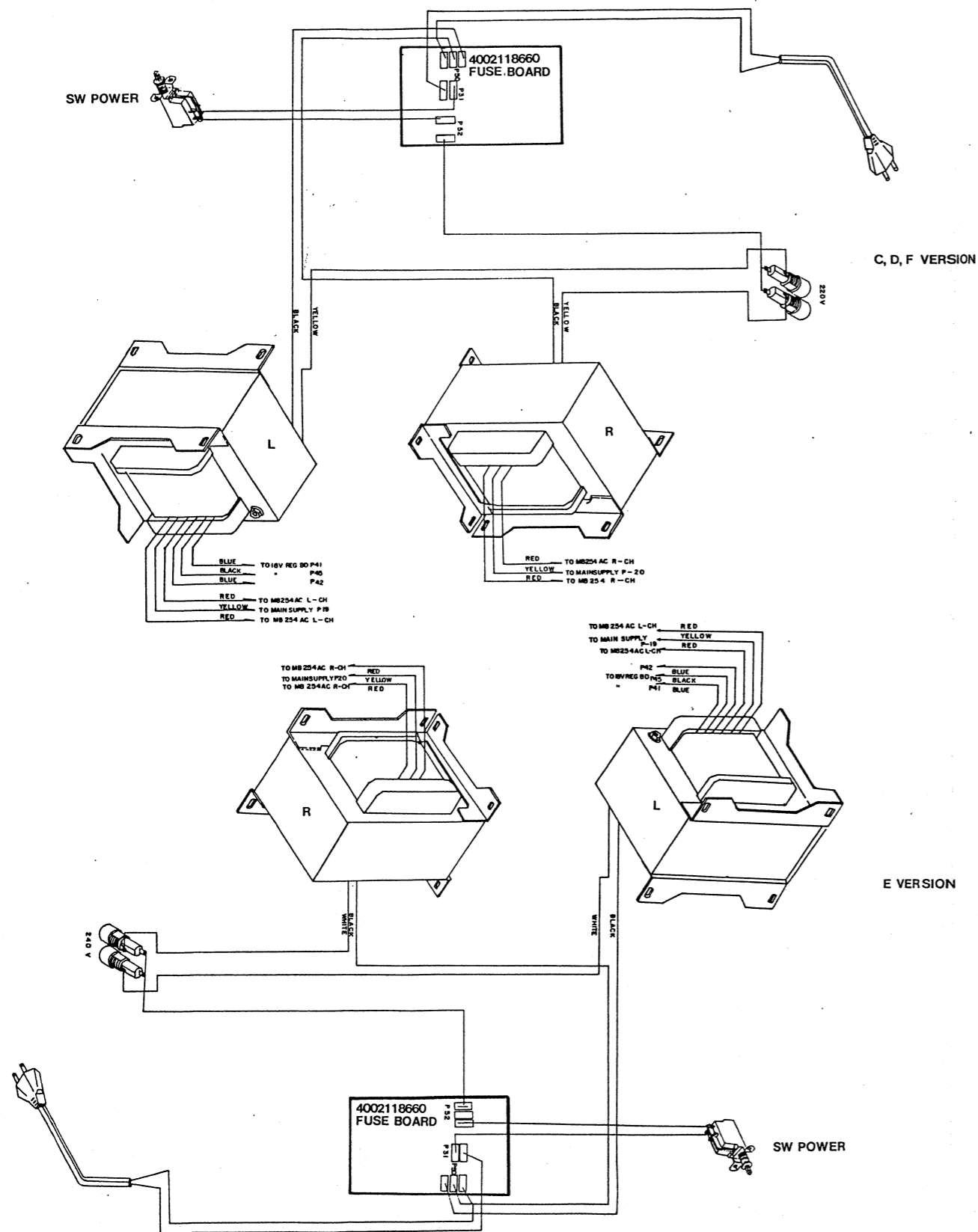
Point to Point Wiring Diagram(II).

Model : AM-8500G



Point to Point Wiring Diagram(III)

Model : AM-8500G



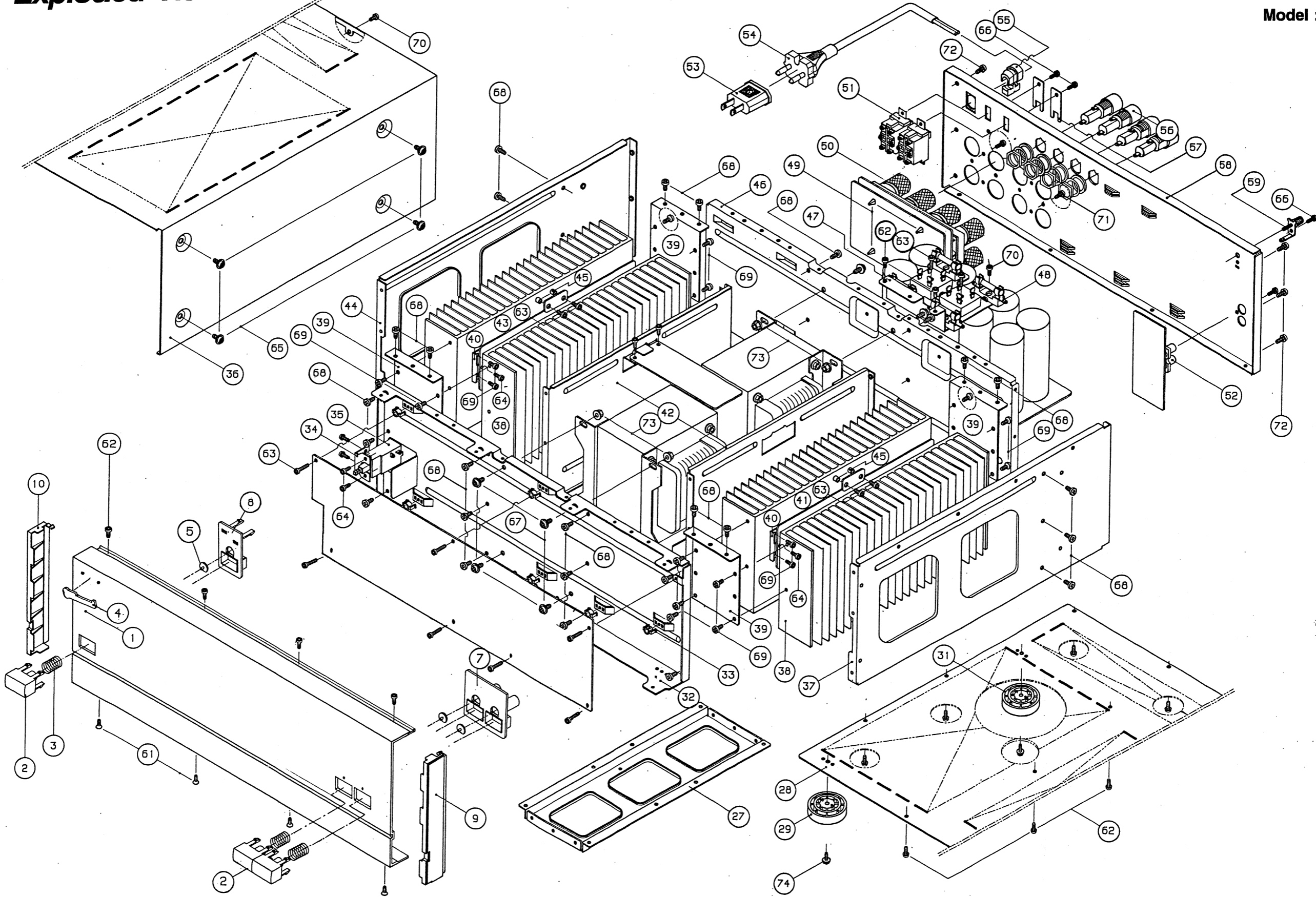
Mechanical Parts List

No	Parts No.	Description	Q'ty	Remark
1	048602018811	Panel-Front, Black	1	KS
	048602018812	Panel-Front, Gold	1	
2	048545074351	Button-Push	3	
3	8555004380	Spring, Power	3	
4	048535034011	Badge (INKEL)	1	KS
	048535833911	Badge (Sherwood)	1	
5	85550431110	Guide LED	3	
7	048525008711	Bezel Button A	1	
8	048525008611	Bezel Button B	1	
9	048583005331	End-Cap, Right	1	
10	048583005341	End-Cap, Left	1	
27	6123619410	Frame Under	1	
28	6122413110	Cover Bottom	1	
29	046033101711	Foot-Base, Hot Stamping	2	
31	6033101611	Foot-Base	2	
32	6122615110	Frame Front	1	
33	6705004210	Spacer, Black	8	
34	6505130710	Bracket Switch	1	
35	4628052610	Switch-Push, Power	1	A,B
	4628052710	Switch-Push, Power	1	C,D,E,F
36	046122017013	Cover-Top, Gold	1	
37	6122615310	Frame, Side Right	1	
38	7503010110	Heatsink Power, Right	2	
39	6505084910	Bracket Heatsink	4	
40	6505070710	Bracket PCB	8	
41	7503010010	Heatsink Power, Left	1	
42	6123406210	Heat Hinder	2	
43	7503010410	Heatsink Power L1	1	
44	6122615320	Frame Side Left	1	
45	7015003110	Bussing	4	
46	6122615210	Frame Back	1	
47	6503012710	Bracket Fuse	1	
48	4458400310	Holder Fuse	4	
49	6528300120	Fastner	4	
50	4408104210	Speaker Terminal	2	
51	4618004010	Switch, Slide	2	B
52	4438105810	RCA-Jack	1	
53	4428300310	Adaptor	1	KS
54	4308002410	Cord-AC, Power, Black	1	A,B
	4308002310	Cord-AC, Power, Black	1	C,D,E,F
	4308000610	Cord-AC, Power, Black	1	E
55	6518000710	Cord-Stopper, Black	1	A,B
	6518000111	Cord-Stopper, Black	1	C,D,F
	6513000210	Cord-Stopper, Black	1	E
56	4458000220	Holder Fuse	2	
ADD	4458000220	Holder Fuse	2	Multy
57	6515007010	Holder Voltage	2	B
58	046102036411	Chassis Back, Black	1	KS
	046102036451	Chassis Back, Black	1	D
	046102036481	Chassis Back, Black	1	Multy
59	4408104910	System-Ground	1	
61	8128330083	Screw, #3 FTC 3x8 ZNB	4	
62	8109330081	Screw, #3 BTC 3x8 ZNY	20	
63	8109230141	Screw, #2 BTC 3x14 ZNY	9	
64	8109330061	Screw, #3 BTC 3x6 ZNY	6	
65	8159440083	Screw, WSAM 4x8 ZNY	8	
66	8119240061	Screw, #2 PTC 4x6 ZNY	1	
67	8159440081	Screw, WSAM 4x8 ZNY	12	
68	8109535081	Screw, #3 BT 3.5x8 ZNY	38	
69	8109235081	Screw, #2 BT 3.5x6 ZNY	32	
70	8119330081	Screw, #3 PTC 3x8 ZNY	11	
71	8109230083	Screw, #2 BTC 3x8 ZNB	9	
72	8109535083	Screw, #3 BT 3.5x8 ZNB	6	
73	8209540011	Nut Flunge M4 ZNY	8	

No	Parts No.	Description	Q'ty	Remark
74	8159330101	Screw, #3 WPTC 3x10 ZNY	4	

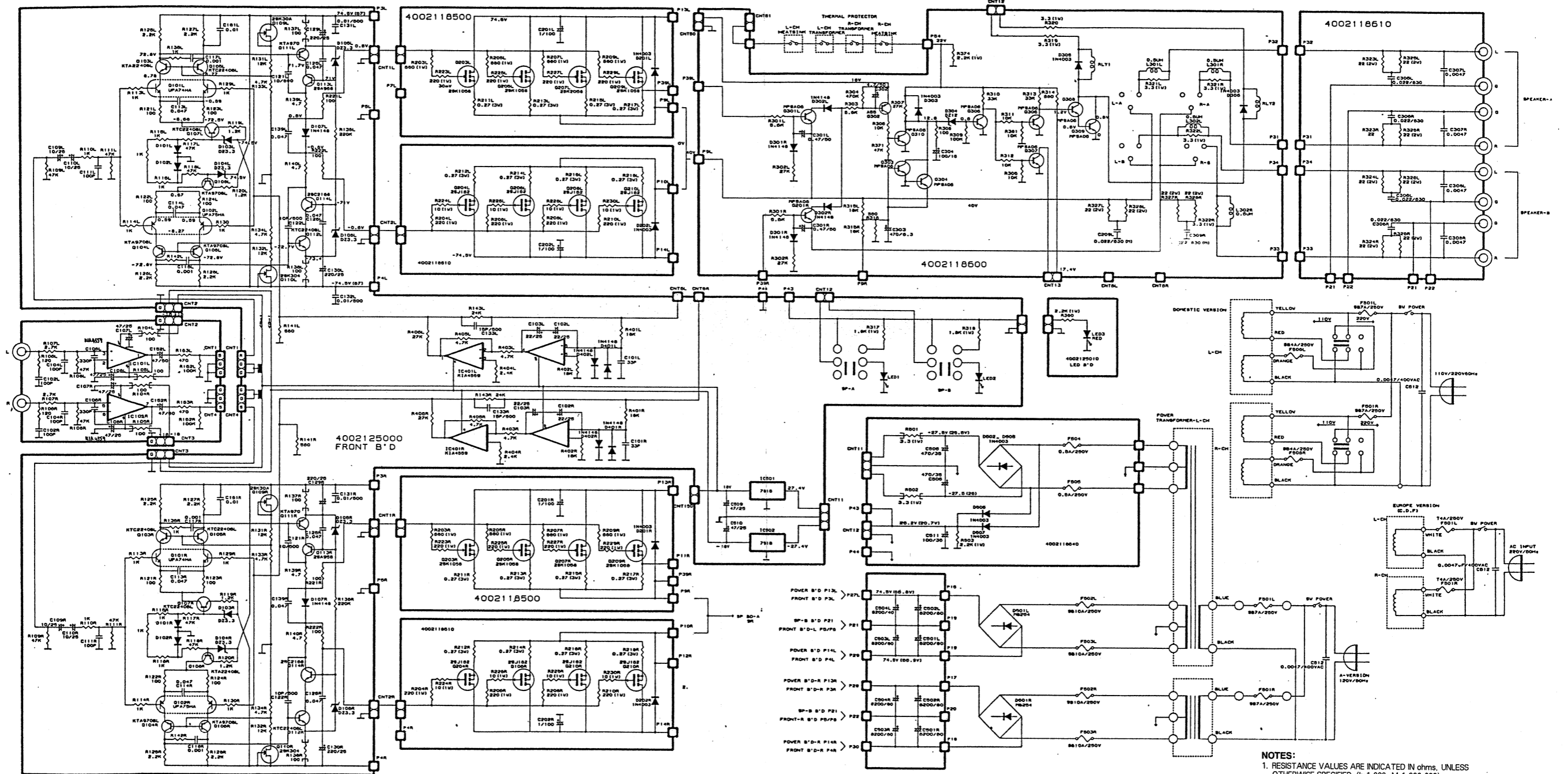
Exploded View of Cabinet & Chassis

Model : AM-8500G



Schematic Diagram

Model : AM-8500G



NOTES:
 1. RESISTANCE VALUES ARE INDICATED IN ohms, UNLESS OTHERWISE SPECIFIED (k=1,000, M=1,000,000)
 2. CAPACITANCE VALUES ARE SHOWN IN MICROFARADS UNLESS OTHERWISE NOTED (p=MICRO-MICRO FARADS).

CAUTION:
 SAFETY PRECAUTION TO BE FOLLOWED DURING SERVICING.
 1. SINCE THOSE PARTS MARKED WITH Δ ARE CRITICAL PARTS FOR SAFETY, USE ONLY THE ONE DESCRIBED IN THE PARTS LIST.
 2. BEFORE RETURNING THE RECEIVER TO THE CUSTOMER, MAKE APPROPRIATE LEAKAGE CURRENT OR RESISTANCE MEASUREMENTS TO DETERMINE THAT EXPOSED PARTS ARE PROPERLY INSULATED FROM THE SUPPLY CIRCUIT.